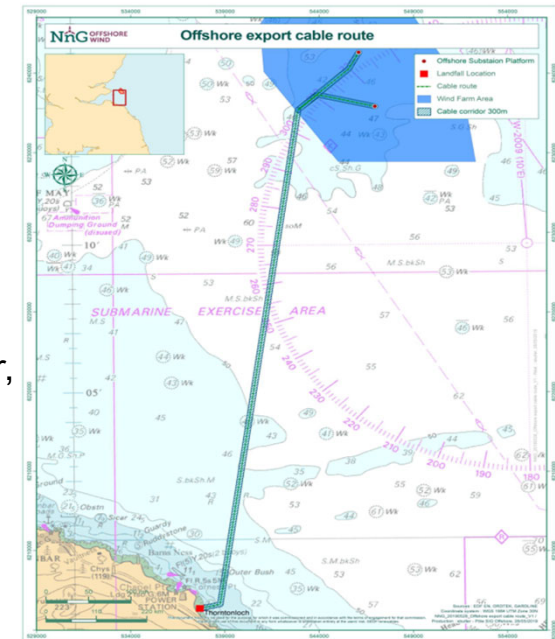


The Power to Connect

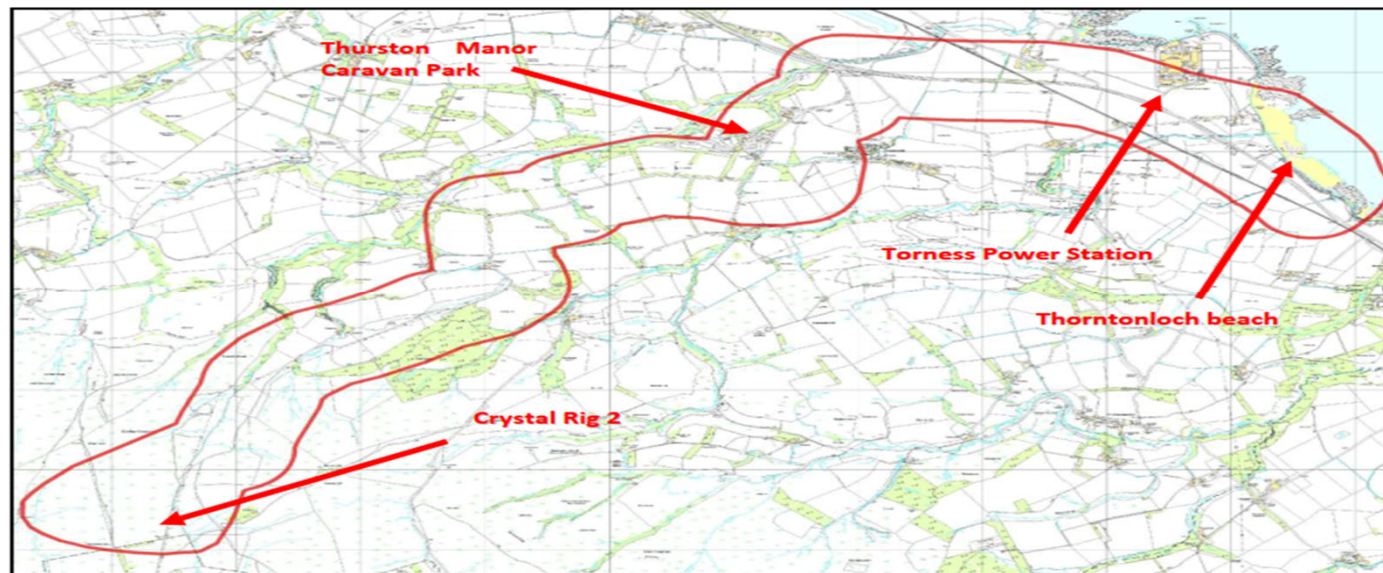


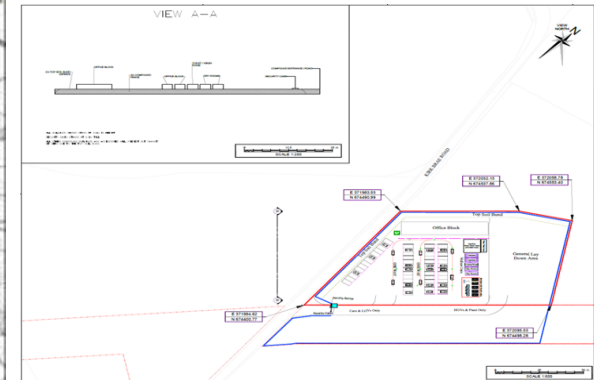
Project facts:

- Neart na Gaoithe means 'Strength of the Wind'.
- The project has the potential to generate 450MW of renewable energy.
- When fully operational, it will generate enough electricity to power over 375,000 households.
- NnG represents an investment of £2 billion in Scotland's energy infrastructure.
- It will offset over 400,000 tonnes of CO2 emissions each year.
- Onshore grid connection is at Crystal Rig onshore wind farm near Dunbar, East Lothian.
- Distance of approximately 1 km between each off shore turbine.
- The closest turbine will be a minimum of 15.5 km from the shore.
- The NnG site will be approximately 105 km².



The identified route corridor for onshore cables runs from the landfall at Thorntonloch beach, west alongside or inside the A1 for approximately 2.7km, then diverts in a south-westerly direction towards CR2, via Thurston Manor and the CR2 access track. The total project length is 12.5km





Preliminary Works:

- Compound Set Up
- Bellmouth installation at Compound Site
- Compound and site delineation fencing
- Access point / Bellmouth installation
- Drainage Installation

Construction of the onshore cable route will include:

- Stripping of the working width and installation of access routes
- Trench excavation, the depth of which is dependent on the soil type etc
- Installation of ducts within trenches (where required)
- Backfilling of trenches
- Joint bay excavation
- Pulling of cables through ducts between joint bays
- Reinstatement of working area (apart from joint bays)
- Completion of joint bays
- Reinstatement of joint bay locations

- 07:00 – 19:00, Monday to Friday
- 07:00 – 13:00, Saturdays

. The proposed shift times for works personnel will be from 0730 to 17.30.

. Works outside the agreed working hours above shall be agreed in advance with East Lothian Council prior to the commencement dates and any affected neighbours advised of the works.



As a competent contractor VI have considered the risks associated with COVID-19 and put in place suitable measures in line with Government guidelines.

The Construction Leadership Council (CLC) have issued a Safe Operating Procedures document, which is sanctioned by the UK Government. The V.I procedures incorporate all the CLC requirements and also provide additional controls related to the 2m rule and control of persons within the 'increased risk of severe illness' (IROS) category. Therefore, complying with the contingency plan which includes the safe operating procedures demonstrates that VI meet and go beyond the requirements of the UK construction industry agreed controls.

- . Traffic Management Plan excludes construction traffic from Innerwick village.
- . Only essential workers will attend site. No visitors allowed i.e. Sales reps etc..
- . Complete site delineation, segregating our workforce and members of the public.
- . All team members are briefed daily on Covid 19 compliance both in and out of work.
- . Increased cleaning regime as well as additional toilet and welfare facilities.
- . 24 Hour security at main compound.
- . CLC guidelines will be constantly monitored and adhered to.

VolkerInfra

The power to connect



Compound Perimeter Fence





Site delineation fence non stockproof



Site delineation fence stockproof





VolkerInfra

The power to connect



VolkerInfra

The power to connect

