

# BERWICK BANK WIND FARM

**Presentation to East Lammermuir  
Community Council**

25 August 2020



For a better  
world of energy

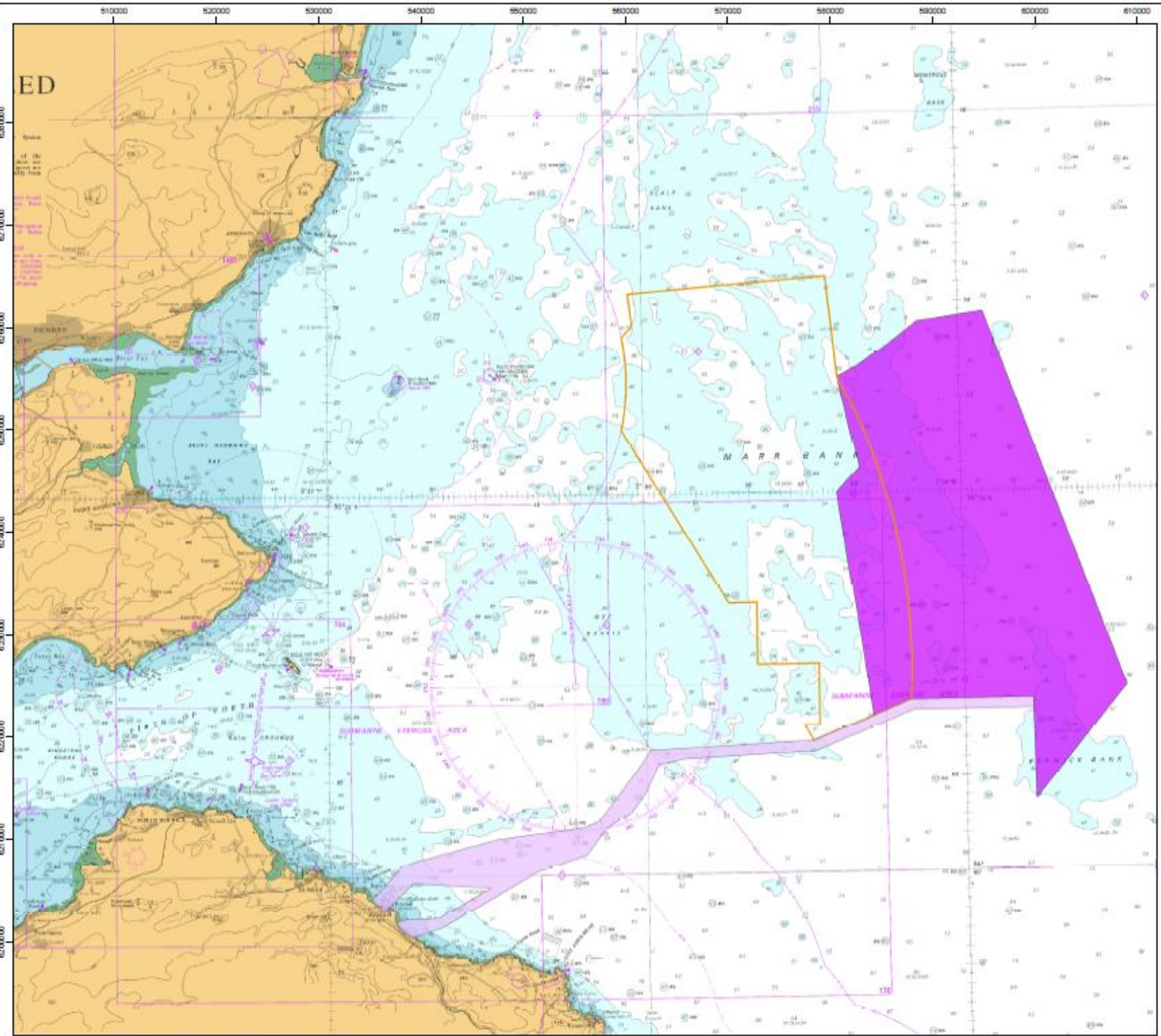
# || AGENDA

- INTRODUCTIONS
- PROJECT OVERVIEW
- ONSHORE AND OFFSHORE ENVIRONMENTAL IMPACT ASSESSMENT
- CONSULTATION AND ENGAGEMENT
- PROGRAMME
- QUESTIONS
- CONTACT DETAILS

# || PROJECT OVERVIEW

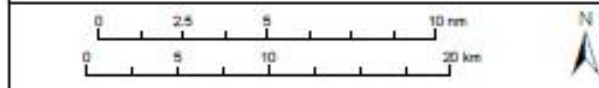
## **Berwick Bank and Marr Bank Wind Farms Background**

- Offshore wind farm projects being brought forward by SSE Renewables – headquartered in Perth.
- Formerly Seagreen 2 and Seagreen 3 – name change in July 2020.
- Located in the North Sea, in the outer Firth of Forth, both developments have the potential to deliver around 3.2GW of installed capacity, making them Scotland’s largest offshore wind farms.
- The proposed installed capacity of the Berwick Bank wind farm and Marr Bank wind farm could be between 1400MW and 2300MW and 900MW and 1,850MW, respectively. Enough to power every household in Scotland.
- Berwick Bank Wind Farm is located 54 km off the East Lothian coast and has secured a grid connection at Branxton, near Torness, in East Lothian.
- Marr Bank is Approximately 40 km from the East Lothian coastline. Grid connection application has been made to national grid. Decision on connection point to be made end September 2020.
- Both projects further offshore than Neart na Gaoithe (NnG) offshore wind farm project.



**Legend**

- Berwick Bank Scoping Boundary
- Berwick Bank Export Cable Scoping Boundary
- Marr Bank Site Boundary



© Crown copyright 2020. All rights reserved. OSN1-54220  
 Drawing Title

**MARR BANK AND BERWICK BANK SITES**

Rev	Date	Details	Status	Drawn	Revised	Checked	Approved
R1	15/07/20	First Issue	SKETCH	CT	ML		-
R2	15/08/20	Simplified	SKETCH	JC	ML		-
R3	-	-	-	-	-	-	-
R4	-	-	-	-	-	-	-

Drawing Number  
**BER-M-DES-0006-01**

Scale: 1:370,000 | Plot Size: A3 | Datum: WGS84 | Projection: UTM30N

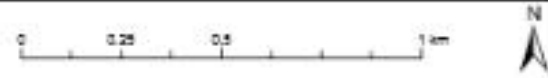


File ref: Z:\Berwick\Forms\Drawings\Berwick\_Des\Berwick-M-DES-0006-01-Overview\OSData\Berwick-M-DES-0006-01-OverviewAndSurroundingSites-02.mxd



**Legend**

Site Boundary



© Crown copyright and database rights 2020 Ordnance Survey. 100014573

Project Name  
**BERWICK BANK WIND FARM**

Drawing Title  
**ONSHORE SITE BOUNDARY**

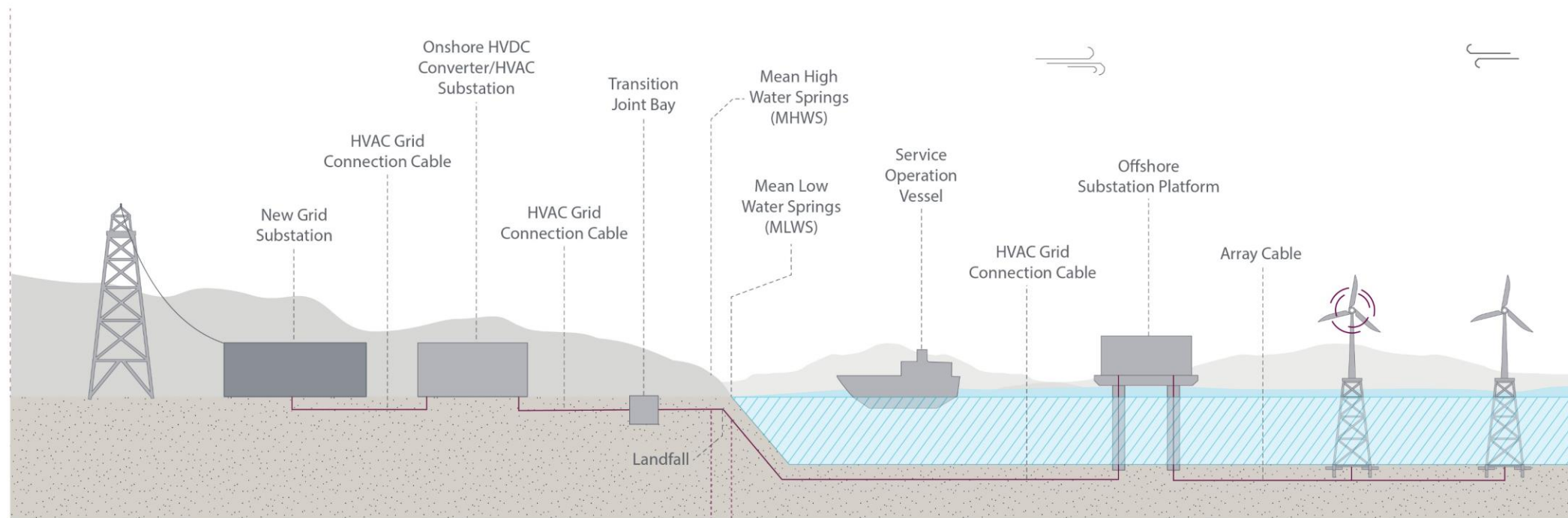
Rev	Date	Details	Status	Drawn	Revised	Checked	Approved
05	08/08/20	Boundary Updated	SKETCH	JC	UT	-	-
06	-	-	-	-	-	-	-
07	-	-	-	-	-	-	-
08	-	-	-	-	-	-	-

Drawing Number  
**BER-T-DES-0003-01**

Scale: 1:17,000 | Plot Size: A3 | Datum: OSGB36 | Projection: BNG



# ONSHORE AND OFFSHORE ENVIRONMENTAL IMPACT ASSESSMENT



<b>Onshore EIA Report</b>	<b>Physical Environment</b>	Geology, Hydrology, Soils and Flood Risk	Physical Processes	<b>Offshore EIA Report</b>	
	<b>Biological Environment</b>	Ecology and Ornithology	Subsea Noise		Subsea Noise
			Air Quality		Air Quality
			Benthic Ecology		Benthic Ecology
			Fish and Shellfish Ecology		Fish and Shellfish Ecology
	<b>Human Environment</b>	Traffic and Transport Cultural Heritage Landscape and Visual Land Use, Tourism and Recreation Socio-economics Noise Air Quality Electric and Magnetic Fields (EMF)	Marine Mammals		Marine Mammals
			Ornithology		Ornithology
			Commercial Fisheries		Commercial Fisheries
			Shipping and Navigation		Shipping and Navigation
			Aviation, Military and Communications		Aviation, Military and Communications
Marine Archaeology and Ordnance			Marine Archaeology and Ordnance		
Seascape and Visual Resources			Seascape and Visual Resources		
Infrastructure and Other Users			Infrastructure and Other Users		
Socio-economics and Tourism	Socio-economics and Tourism				
		Addressed in offshore physical environment topics			

# || CONSULTATION & ENGAGEMENT

- Current Scottish Government guidance in relation to Covid-19 means all current consultation to be carried out online and over telephone.
- Welcome any suggestions to engage going forward – SSE Renewables at the start of the process.
  - How do Community Councils want SSE Renewables to engage throughout the planning process?
- Community Investment
  - STEM
  - SSE Renewables ‘be the difference’ days
  - Example - Beatrice Offshore Wind Farm – Wick investment/community benefit

# || BERWICK BANK CONSENTS PROGRAMME

- Offshore Scoping Report submitted to Marine Scotland – 6 August 2020
- Onshore Scoping Report submitted to East Lothian Council – 13 August 2020
- Onshore and offshore environmental surveys - 2020 - 2021
- Stakeholder engagement – ongoing 2020/2021
- Public exhibitions – November 2020; Q2 2021
- Onshore and Offshore EIA Reports submission – Q3/Q4 2021



# QUESTIONS



For a better  
world of energy